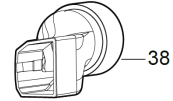
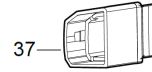
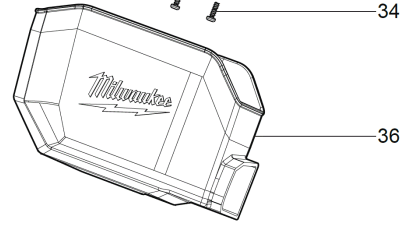
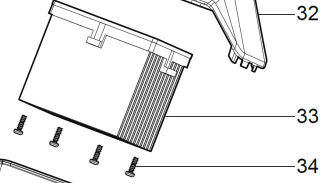
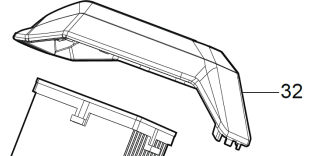
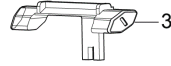
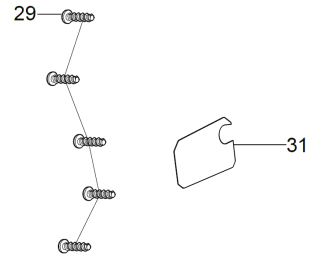
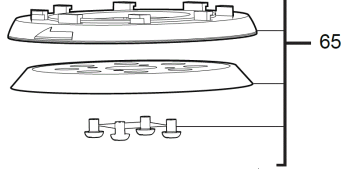
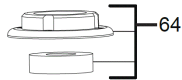
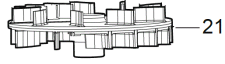
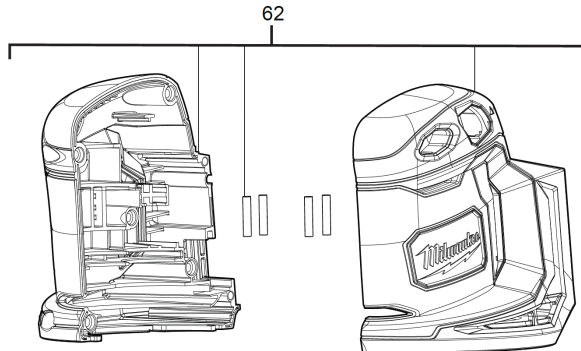
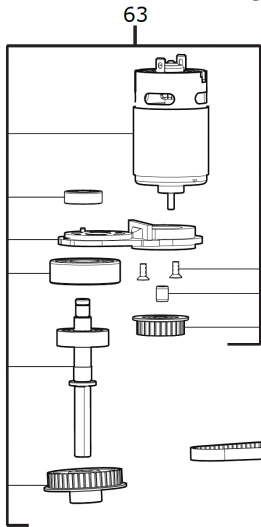
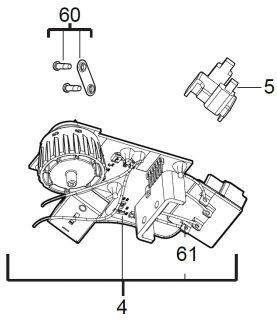


# M18BOS125-0 AK.EXZENTERSCHLEIFER XXX

4933464228 - M18BOS125-0 - 4000467519





Position	Quantity	Description	Part number	EAN
0003 1	1	UMSCHALTHEBEL	4931465600	4058546237004
0004 2	1	Motorsteuerung/Motor/Elektrowerkzeug	4931465601	4058546237011
0005 3	1	HALTER	4931465602	4058546237028
0006 4	1	Feder, nicht rost. Stahl	4931408243	4002395814466
0019 5	1	BAND/ZELLKAUTSCHUK	4931465603	4058546237035
0021 6	1	AUSGLEICHGEWICHT f. Exzenterschleifer	4931465604	4058546237042
0024 7	1	Schraube, nicht rost. Stahl	4931465605	4058546237059
0029 8	5	Schraube, nicht rost. Stahl	4931465606	4058546237066
0031 9	1	LEISTUNGSSCHILD/FOLIE	4931465607	4058546237073
0032 10	1	ABDECKHAUBE/AKKU-EXZENTERSCHLEIFER	4931465608	4058546237080
0033 11	1	PAPIERFILTER/EXZENTERSCHLEIFER	4931465609	4058546237097
0034 12	4	Schraube, nicht rost. Stahl	4931465610	4058546237103
0036 13	1	STAUBAUFFANGBEHAELTER /EXZENTERSCHLEIFER	4931465611	4058546237110
0037 14	1	VERLAENGERUNG/AKKU-EXZENTERSCHLEIFER	4931465612	4058546237127
0038 15	1	ADAPTER/Staubabsaugung/Exzenterschleifer	4931465613	4058546237134
0060 16	1	HALTEPLATTE	4931465614	4058546237141
0061 17	1	KLEMMLEISTE	302119005	4002395856152
0062 18	1	GEHAEUSE fuer Exzenterschleifer	4931465615	4058546237158
0063 19	1	Rotor f. Elektrowerkzeuge	4931465616	4058546237165
0064 20	1	KUGELLAGER/ELEKTROWERKZEUG	4931465617	4058546237172